

# Ready, Set, Go!

for the Seasonal Resident  
and Property Owner



**W**ildland fire threatens thousands of homes in the wildland-urban interface (WUI) – an area or zone where human development meets or mixes with the natural vegetation. As a seasonal resident or property owner, it is important to educate yourself and do your part to prepare your home for a wildland fire event. Even though you may not reside in the WUI full-time, it is critical that you take personal responsibility for your property and safety by preparing for wildland fire.

The RSG! Program gives you simple, easy-to-follow tips to increase your safety and help create a safer environment for the firefighters who respond during wildland fires.

## Ready Be Ready

Take personal responsibility by preparing long before the threat of a wildland fire so your property is ready to sustain the threat. Create defensible space by clearing vegetation away from your structures, including accessory structures such as sheds or barns.

Use fire-resistant landscaping and harden structures using fire-safe construction. Assemble emergency supplies and belongings in a safe place within the home. Plan escape routes and make sure everyone staying on the property is aware of the plan of action during an emergency.

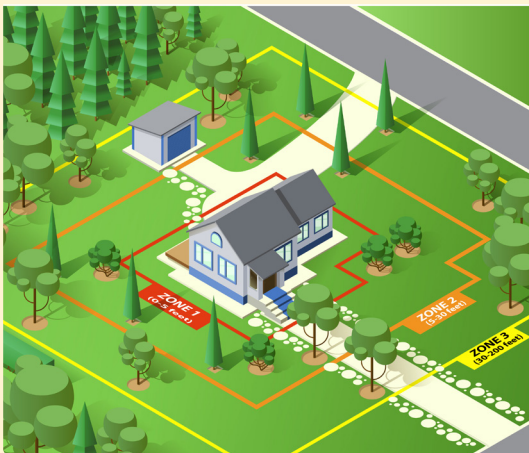
## Set Be Alert

Remain vigilant and up-to-date with the latest news and information on the fire from local media, fire departments and public safety agencies. Implement your personal Wildland Fire Action Plan by gathering your belongings and necessary items and preparing your home for the fire.

## Go! Act Early

Evacuate early and execute your Wildland Fire Action Plan. Ensure you have your household accounted for and are coordinated in evacuating according to emergency personnel. Leave early to prevent becoming a hazard to firefighting personnel.

## Defensible Space Increases Your Safety and Reduces Fire Damage.



**D**efensible space is a buffer zone around the home or structure created by the removal of weeds, brush and other overgrown natural vegetation around structures. Creating defensible space can decrease fire damage to structures and allow space for firefighting operations while increasing your home's stand-alone survivability.

Landscaping plans that include non-combustible materials, fire-resistant plants and regular mitigation can contribute to the creation and maintenance of defensible space.

Special consideration should be given to wind-driven embers which can travel up to a mile or more ahead of the flame front. Regularly inspect or replace outside screens and ventilation points on the home and structures. Also remember the vegetation on *your* property may be more of a risk to those living around you than to your own home. Work with your neighbors to help reduce the risk to everyone's homes.



Learn how you can make a difference while protecting yourself and your community. Visit [wildlandfireRSG.org](http://wildlandfireRSG.org) to learn more about simple actions you can take to prepare.

# *My Personal* Wildland Fire ACTION PLAN

*Ready* Before a fire occurs

## Property Owner Safety Checklist

- ☐ Create an information package for seasonal guests that includes:
  - ☐ Emergency and non-emergency contact information (including your local fire department's information)
  - ☐ Your immediate contact information
  - ☐ Phone numbers or websites to sign up for local notification systems
  - ☐ A list of local news and radio stations
  - ☐ Property maintenance contacts
  - ☐ Locations of electrical and natural gas shut offs
  - ☐ A map/directions marking all neighborhood exits
  - ☐ Identified safety zones
- ☐ Ensure the property's address is clearly marked and visible from the street.
- ☐ Create defensible space around all structures.
- ☐ Create and follow a maintenance plan to keep property mowed and clear of vegetation debris and loose, combustible materials.
- ☐ Identify any external water sources that may be valuable to firefighting efforts. These include wells, pumps, streams, etc.
- ☐ Identify any hazards firefighters should be aware of, such as bridges, gates, and fuel tanks.
- ☐ Reinforce the importance of preparing for and maintaining situational awareness of wildland fire threats for the safety of the visiting seasonal resident or guest as well as neighbors.
- ☐ Consider participating in fuel hazard mitigation programs in your area.

## Seasonal Resident or Guest Safety Checklist

- ☐ Review the information package provided by the property owner.
- ☐ Become familiar with area roads, including all exit routes from your immediate area.
- ☐ Check with the local authorities before starting a campfire.
- ☐ Sign up with local agencies to receive emergency notifications. Reference the property owner's information package or contact the local fire department to learn what these systems may be.
- ☐ Assemble a Go Kit and include the following items:
  - ☐ Prescription medications
  - ☐ Emergency supplies
  - ☐ Maps/directions marking multiple exit routes
  - ☐ Important contact list with phone numbers
  - ☐ Contact information for area shelters
  - ☐ Chargers for electronic communication devices

# My Personal Wildland Fire ACTION PLAN

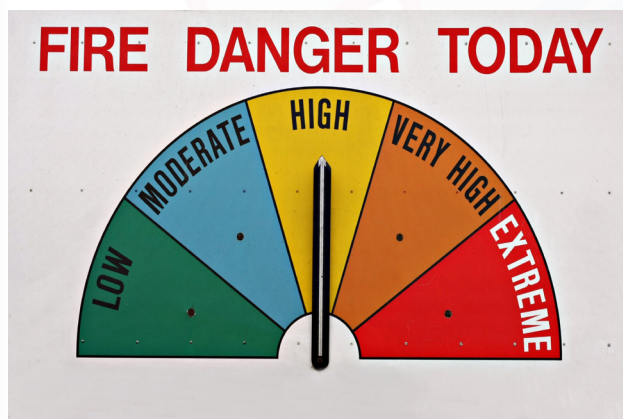
## Safety Checklists for the Seasonal Resident, Property Owner and Guest

### Set As the fire approaches

- ☐ Complete and practice your personal Wildland Fire Action Plan. To obtain additional copies, contact your local fire department.
- ☐ Stay alert and remain aware of the situation. Monitor local radio or television stations for updates.
- ☐ Leave your lights on so firefighters can see your house under smoky conditions.
- ☐ If time allows, property owners should turn off propane tanks and other gas at the meter.

### Go! Act early

- ☐ Get your Go Kit and leave well before the threat approaches, following an accessible exit route.
- ☐ Use your Personal Action Plan for guidance.
- ☐ Cooperate with local authorities during evacuation and re-entry processes.
- ☐ Remain current with the latest information and ensure you and your family are located in a safe and known location.



Remember: During a wildland fire, responders may not be from the immediate area or have local knowledge. Having your address and water supply clearly visible will save valuable time.

# *My Personal* Wildland Fire ACTION PLAN

Write up your Wildland Fire Action Plan and post it in a location where every household member can see it. Practice multiple exit routes. During high-fire danger days in your area, monitor your local media for information and be ready to implement your plan.

## IMPORTANT PHONE NUMBERS (Emergency and Non-emergency)

Name

Phone Number


## PROPERTY OWNER

--

## LIST LOCAL NEWS AND RADIO STATIONS

--

## PROPERTY MAINTENANCE CONTACTS

--

## LOCATION OF ELECTRICAL AND NATURAL GAS SHUT OFFS

--

## DIRECTIONS NOTING ALL NEIGHBORHOOD EXITS

--

## EXIT ROUTES

1. \_\_\_\_\_
2. \_\_\_\_\_
3. \_\_\_\_\_
4. \_\_\_\_\_

## MEETING LOCATION

--

## AREA SHELTERS/SAFETY ZONES

Name

Address

Phone Number


## NOTES

--



For more information, contact your local fire department and visit [wildlandfireRSG.org](http://wildlandfireRSG.org)